

# Bridgeton Commons Apartments

*An Affordable Family Community*



---

---

# Bridgeton Commons Apartments

---

---

## Home Features:

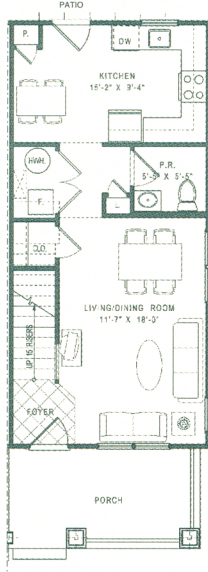
- Front Porch and Rear Patio
- Wired for Cable Television and Telephone
- Ample Interior Storage and Exterior Storage Sheds
- Insulated, Tilt-In Windows for Maximum Comfort and Ease of Cleaning
- Washer/Dryer Hookups
- One Off Street Parking Space
- Full Whirlpool Appliance Package, Including Dishwasher and Garbage Disposal
- Wall to Wall Carpeting
- Selected Handicapped Units
- Ceramic Tiled Bathrooms
- Natural Linoleum Kitchen Floors
- Environmentally Friendly Design
- Separately Metered Utilities
- Energy Star Efficient

## Community Features:

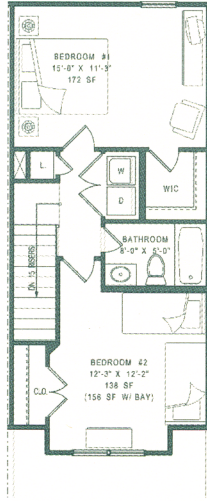
- Victorian Styled Twin Homes
- Lush Landscaping
- Full Service Community Building for Meetings and Parties
- Ample Parking
- Community Laundry Facilities
- Neighborhood Parks
- Pedestrian Friendly Environment
- Convenient to and Within Walking Distance of Local Shopping and Entertainment
- Social Service Programs
- On-site Management and Maintenance



## Two Bedroom Unit A

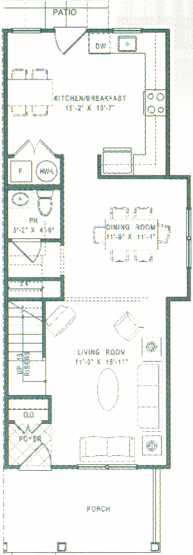


First Floor

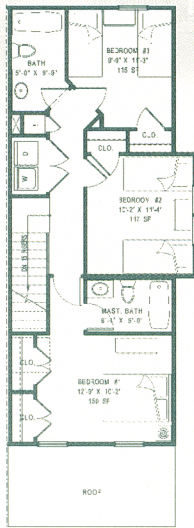


Second Floor

## Three Bedroom Unit C

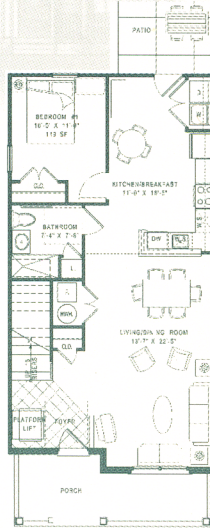


First Floor

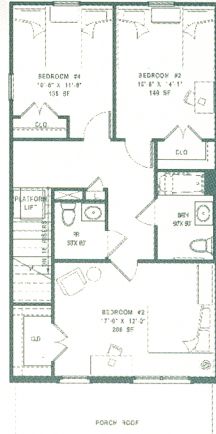


Second Floor

## Four Bedroom Unit F



First Floor



Second Floor

---

---

# Bridgeton Commons Apartments

---

---

Welcomes: \_\_\_\_\_

## Rental Rate Quote

Persons in Household: \_\_\_\_\_

Apartment Size: \_\_\_\_\_

Monthly Rent: \_\_\_\_\_

Security Deposit: \_\_\_\_\_

Non-Refundable Application Fee: \_\_\_\_\_

Notice: All Rental Rates and Availability Are Subject to  
Change and/or Correction, Rents Exclude Electric and Gas

This Rental Rate is Based on a Total Household Income not  
Exceeding \$ \_\_\_\_\_

By: \_\_\_\_\_

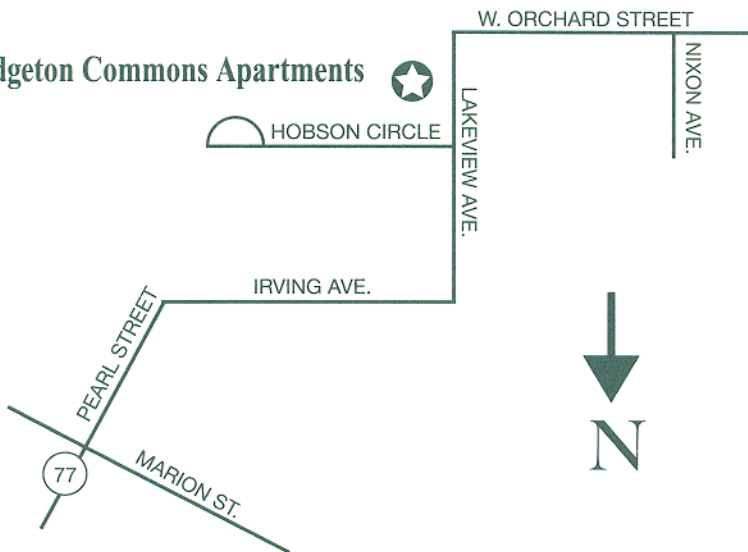
Date: \_\_\_\_\_

For more information, please call:  
**856-575-0572**

Professionally Managed by:  
**Ingerman Management Company**  
**725 Cuthbert Boulevard**  
**Cherry Hill, NJ 08002**  
**T: 856.662.1730 F: 856.773.0126**  
**www.ingerman.com**



## Bridgeton Commons Apartments



### Directions to the Bridgeton Commons Apartments

1. South on Route 77 (Pearl Street).
2. East on Irving Avenue.
3. Left on Lakeview Avenue to Hobson Circle.
4. The Management Office is located on the left.